

TEST SQUARE

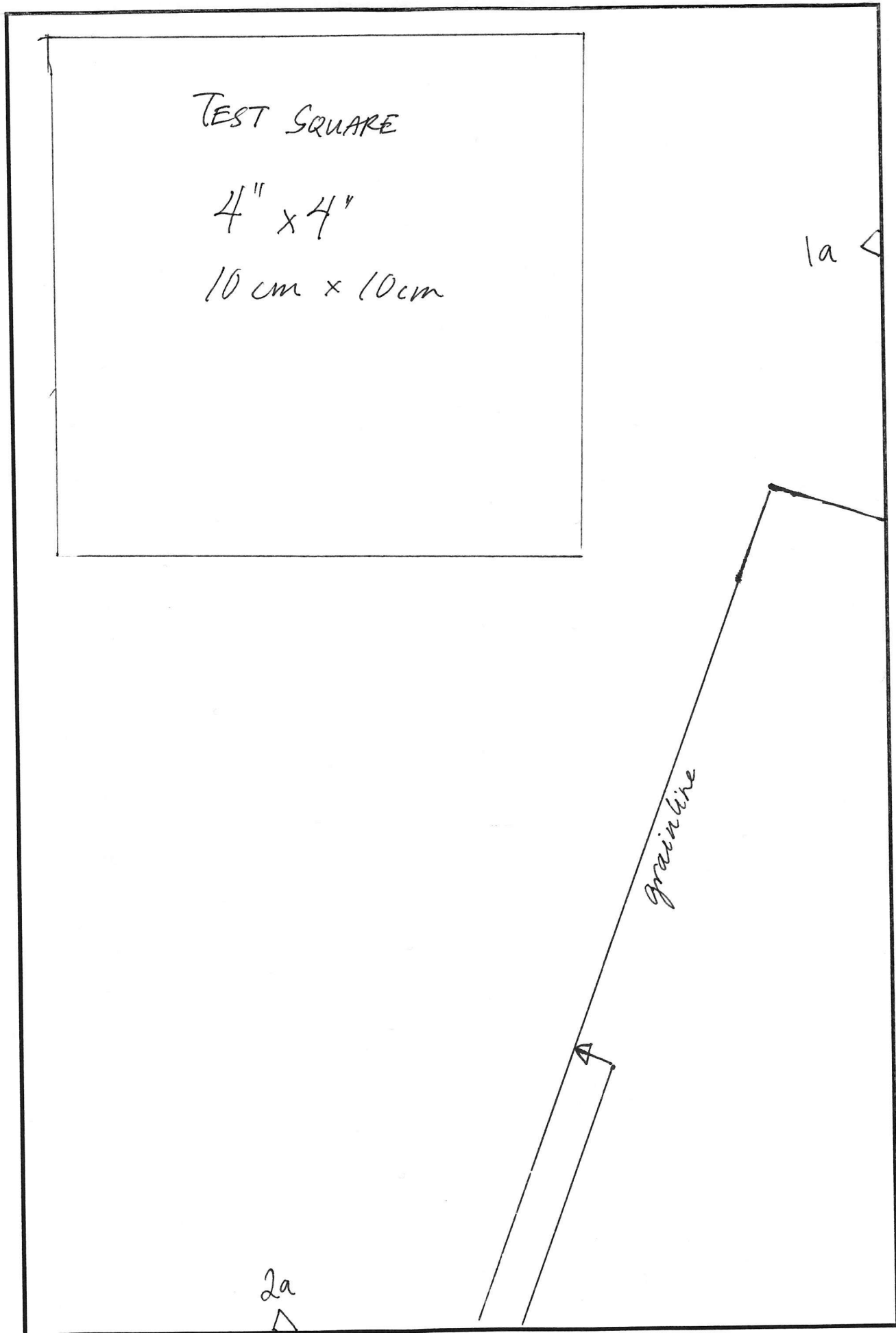
4" x 4"

10 cm x 10 cm

1a

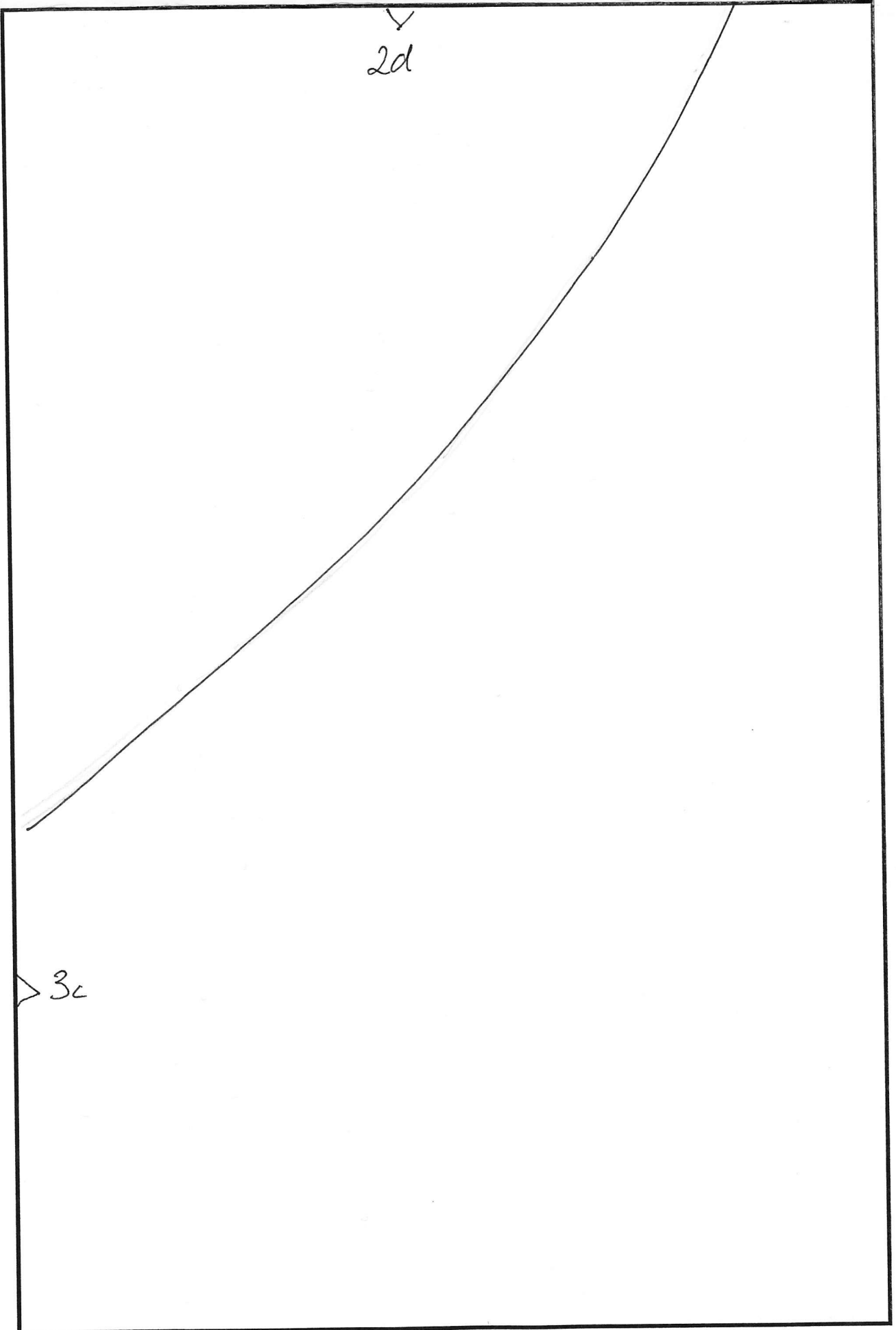
grainline

2a



2d

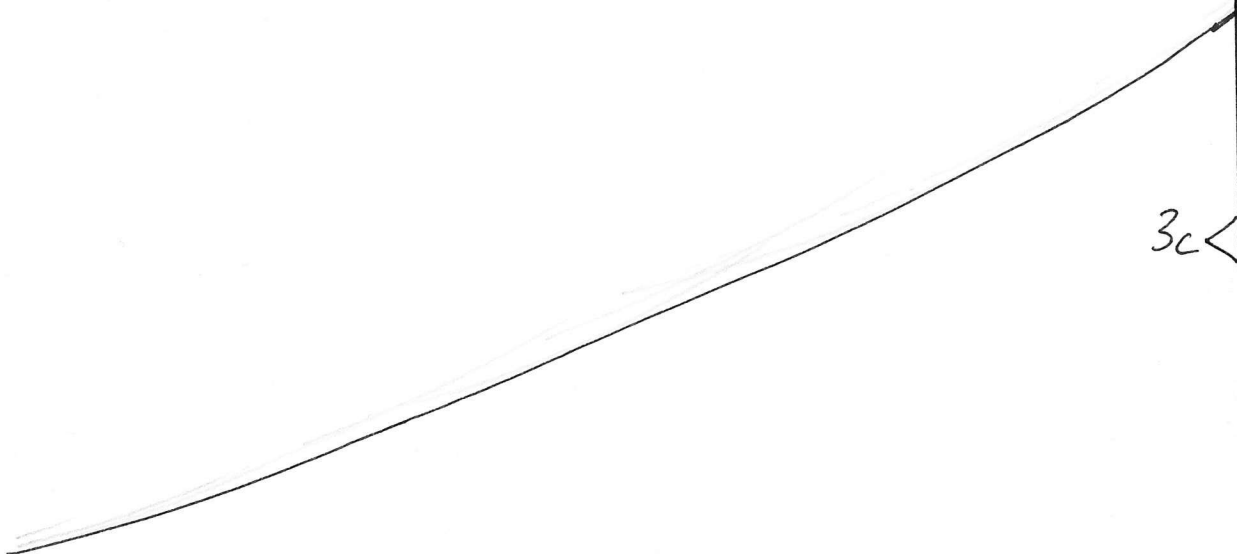
3c



✓
2c

3b

3c



2b

THE GROWN-UP BALLET SKIRT

- ① cut skirt on fold
- ② finish all edges with narrow zigzag
- ③ zigzag stitch waist edge to 2.5 yards
narrow grosgrain ribbon

recommended fabrics: polyester georgette,
polyester chiffon

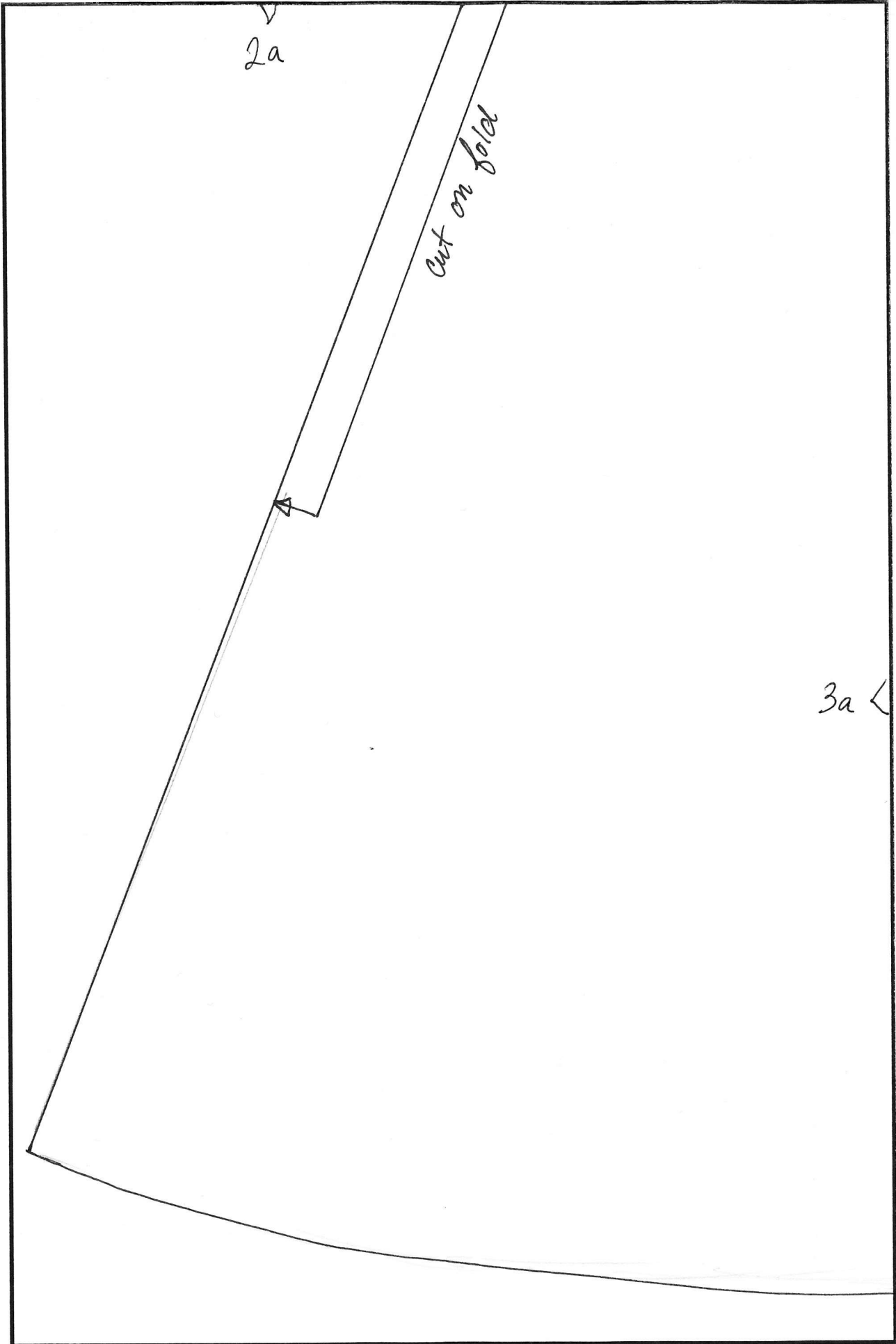
3a

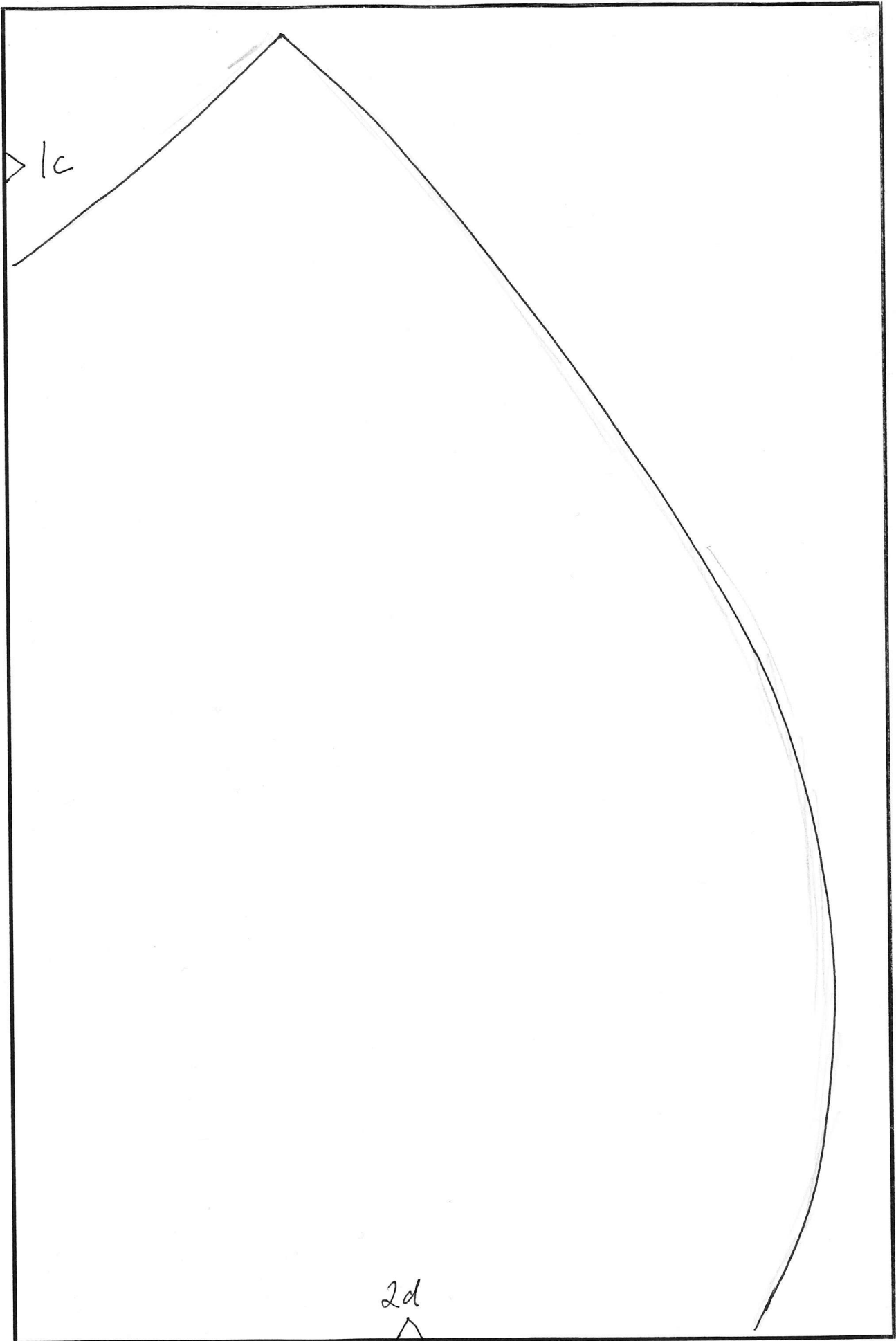
3b

2a

cut on fold

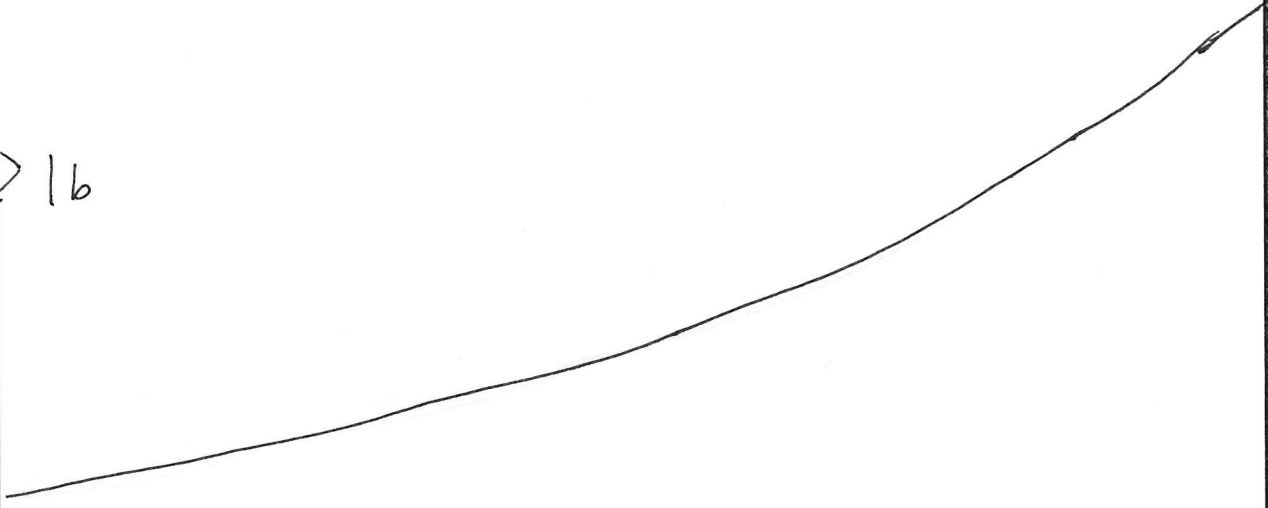
3a





16

16



SKIRT
CUT 1 ON FOLD
DO NOT ADD SEAM ALLOWANCE

20

> | a

l b <

THE GROWN-UP BALLET SKIRT

SIZES XS - M

BY ELAINEMAY / THE SELFISH SEAMSTRESS

JAN 2010

2b
^